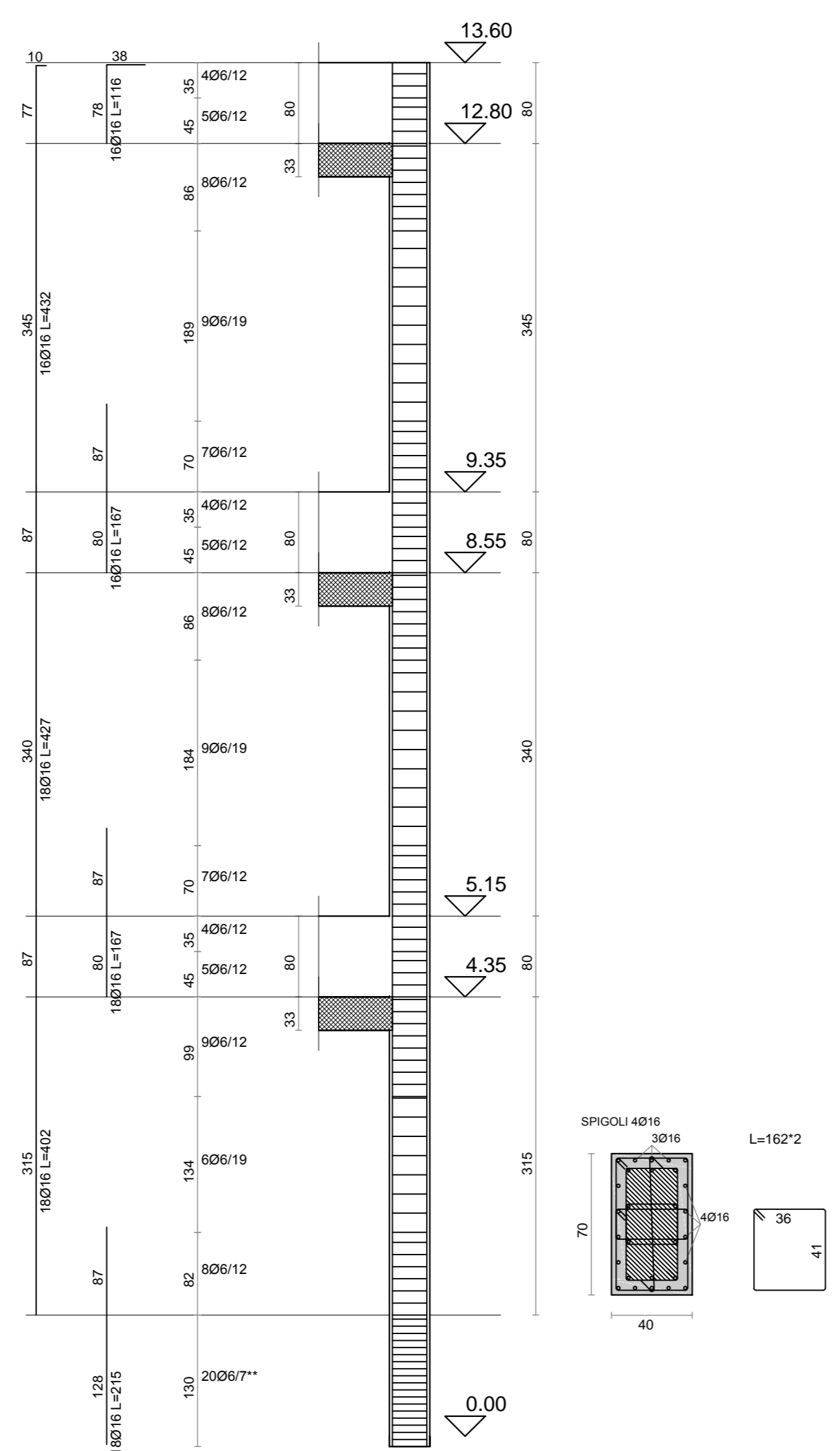
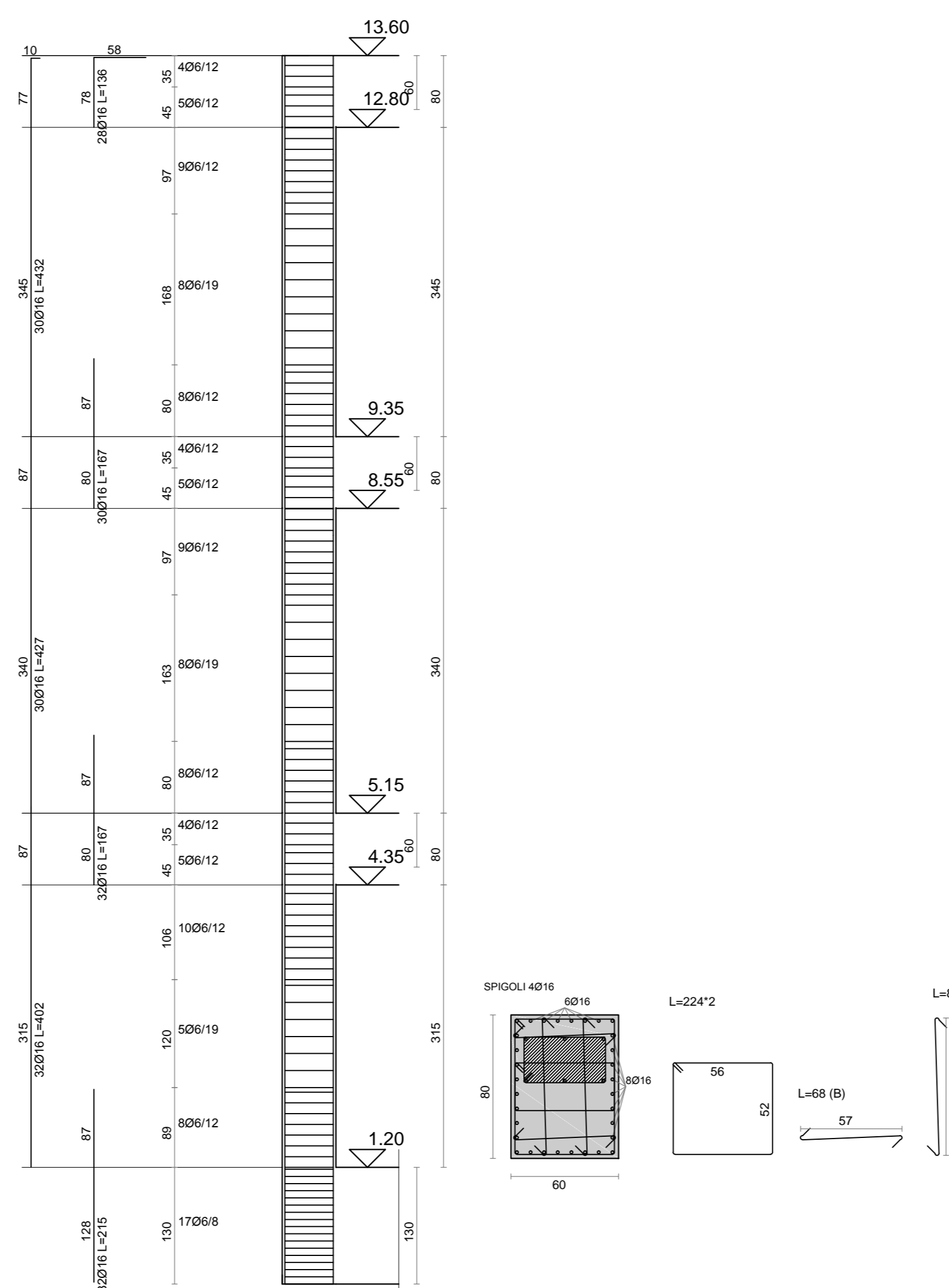


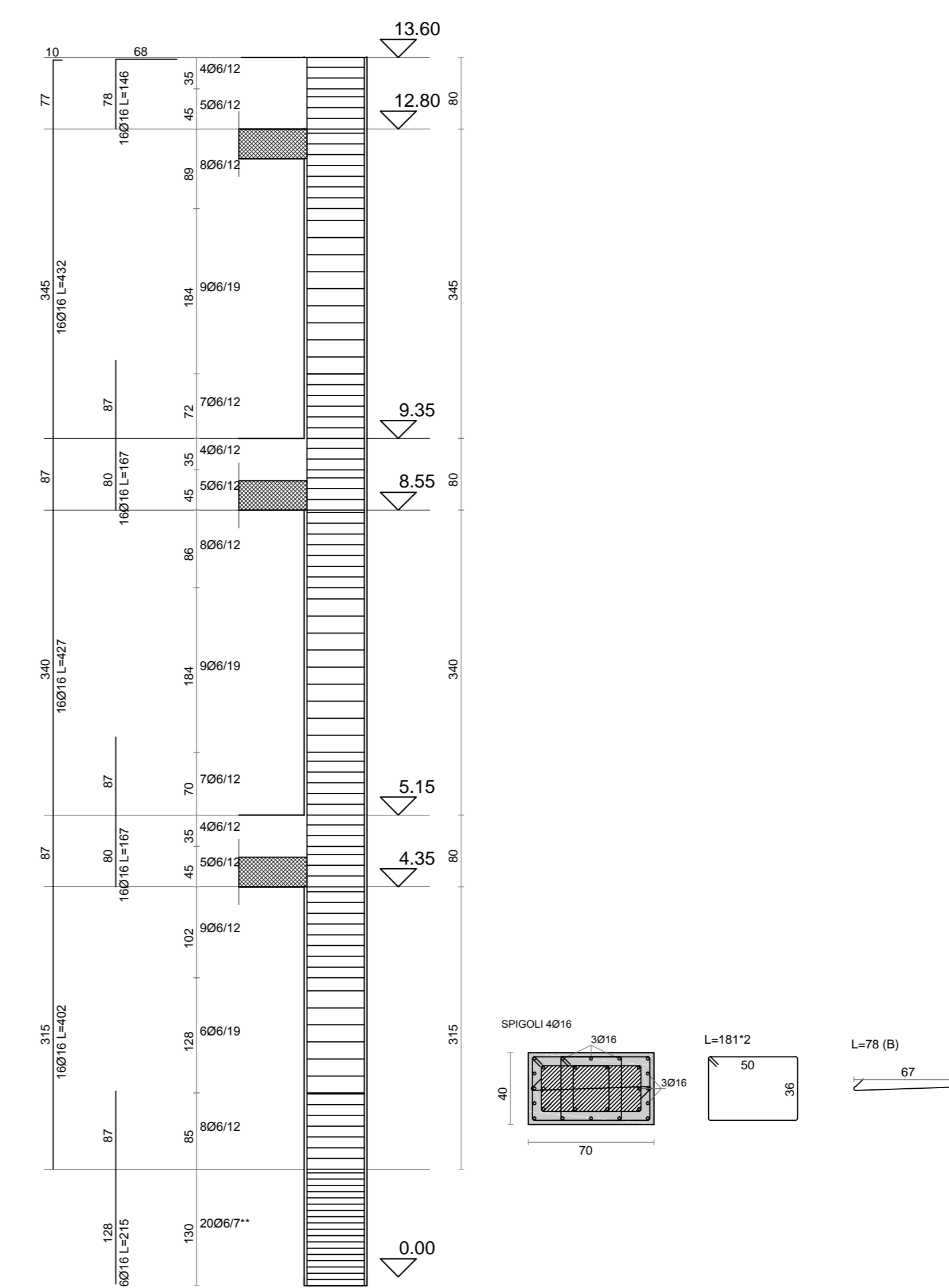
PILASTRATA 15



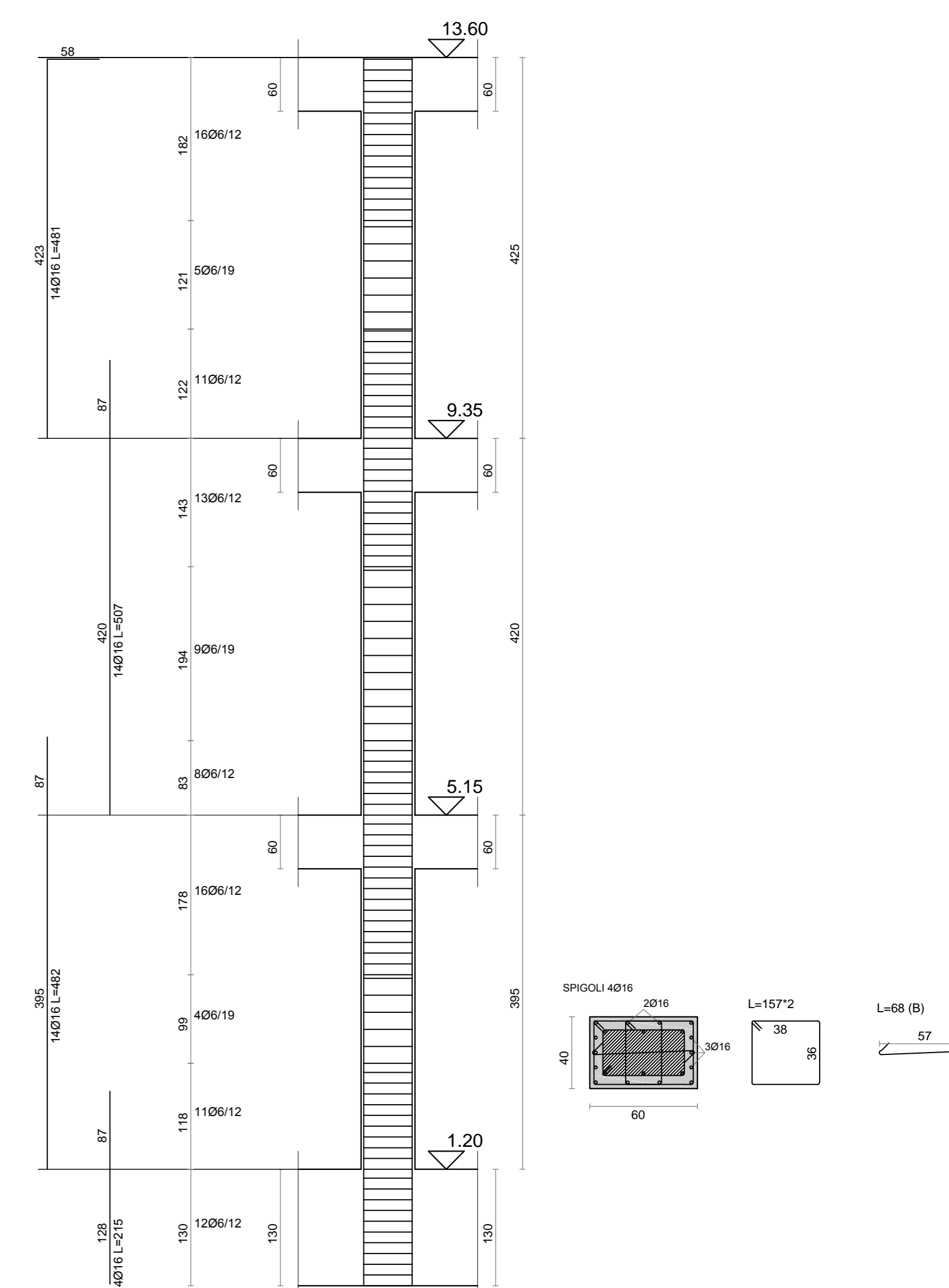
PILASTRATA 16



PILASTRATA 24



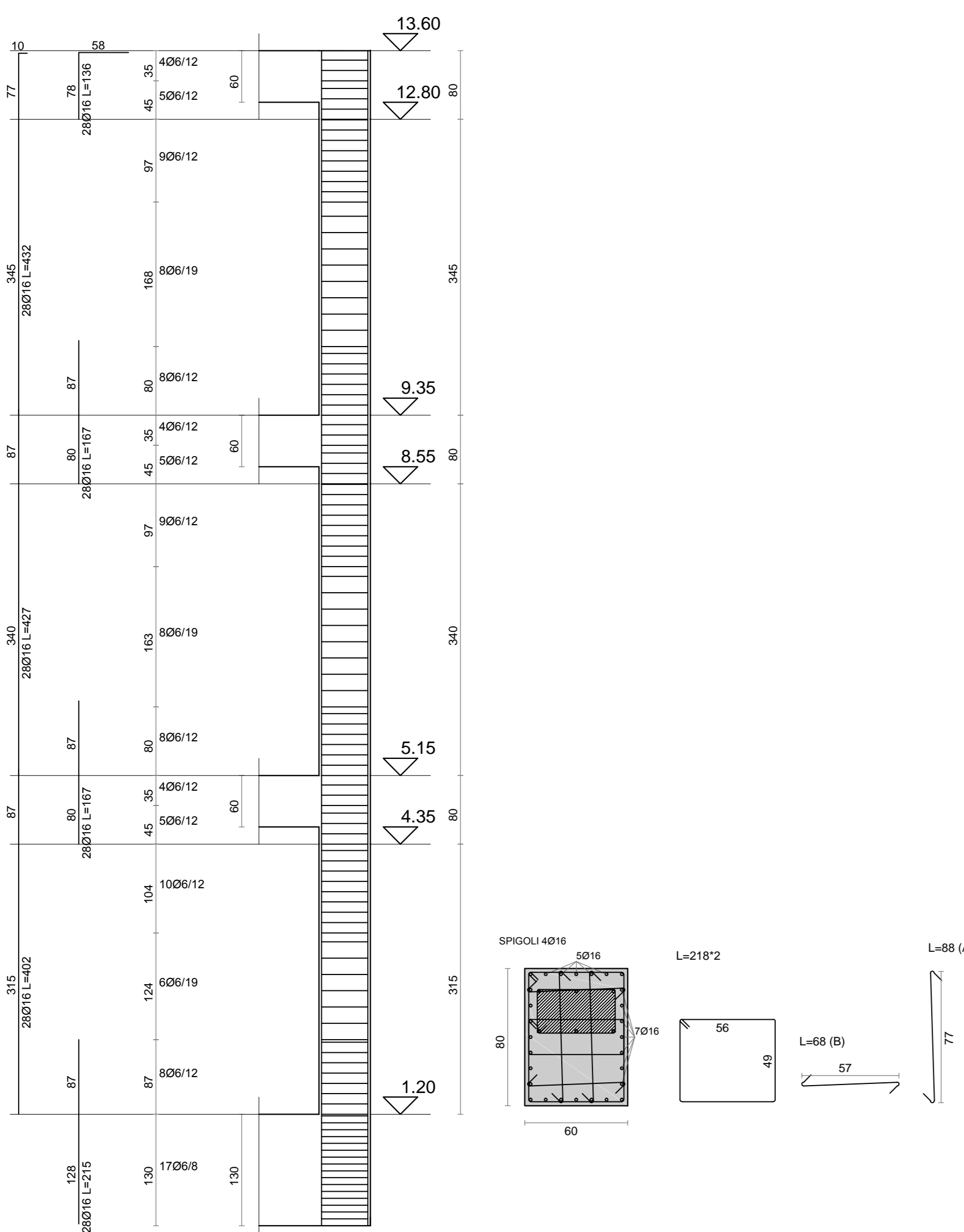
PILASTRATA 40



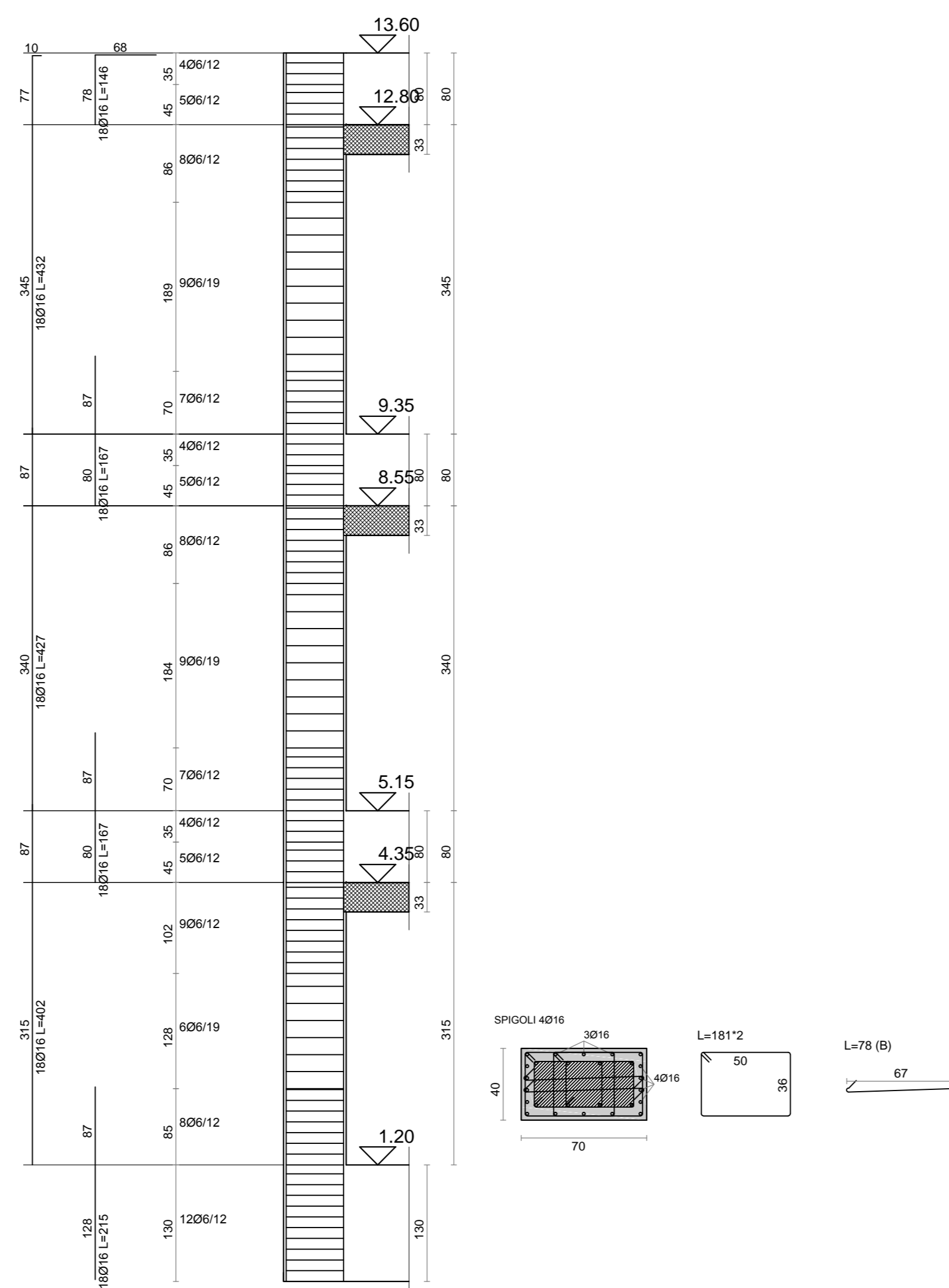
PILASTRATA 45

LEGGENDA

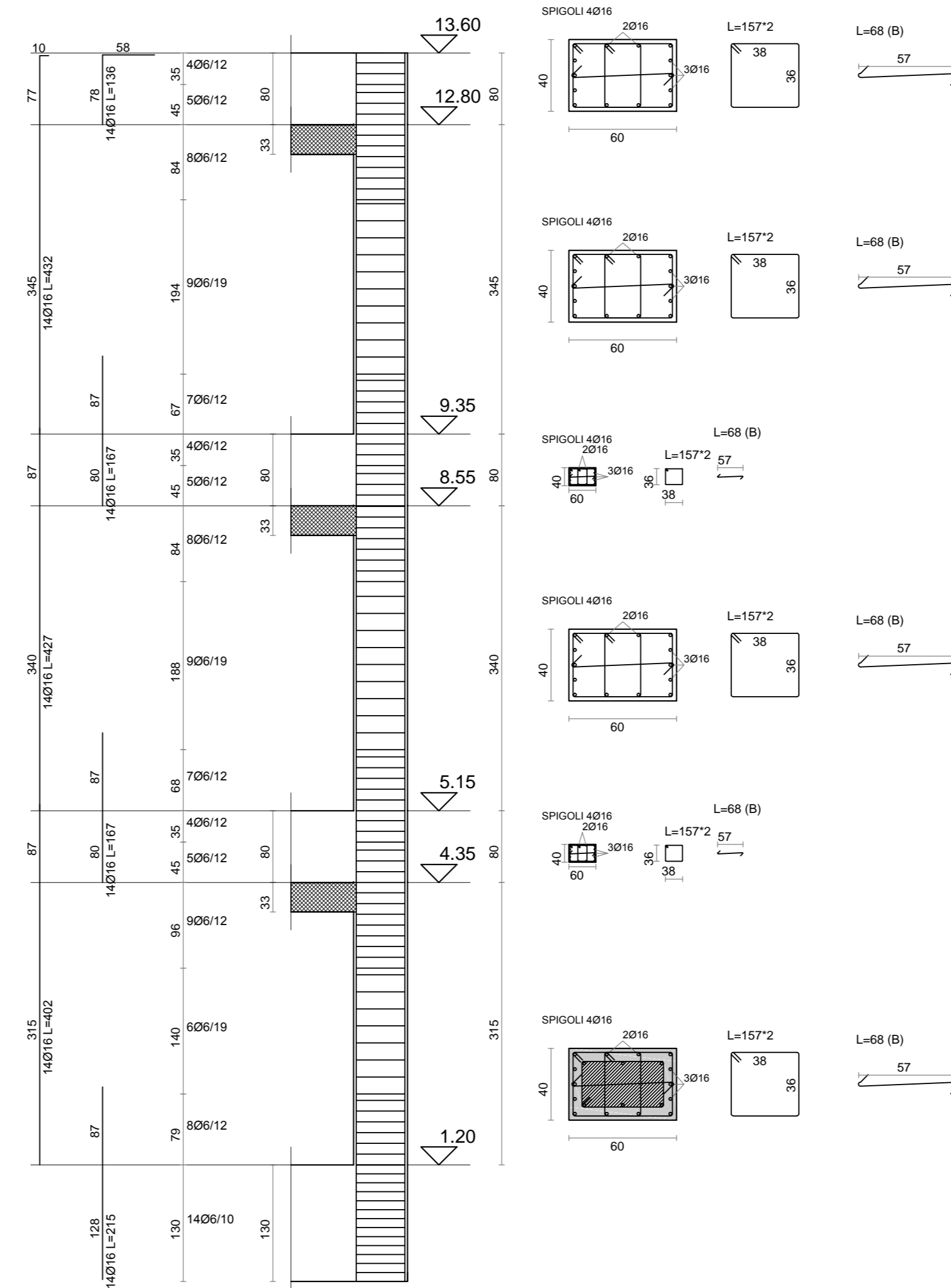
- SEZIONE DA PROGETTO SIMULATO
- SEZIONE DI PROGETTO
- IPE DI PROGETTO



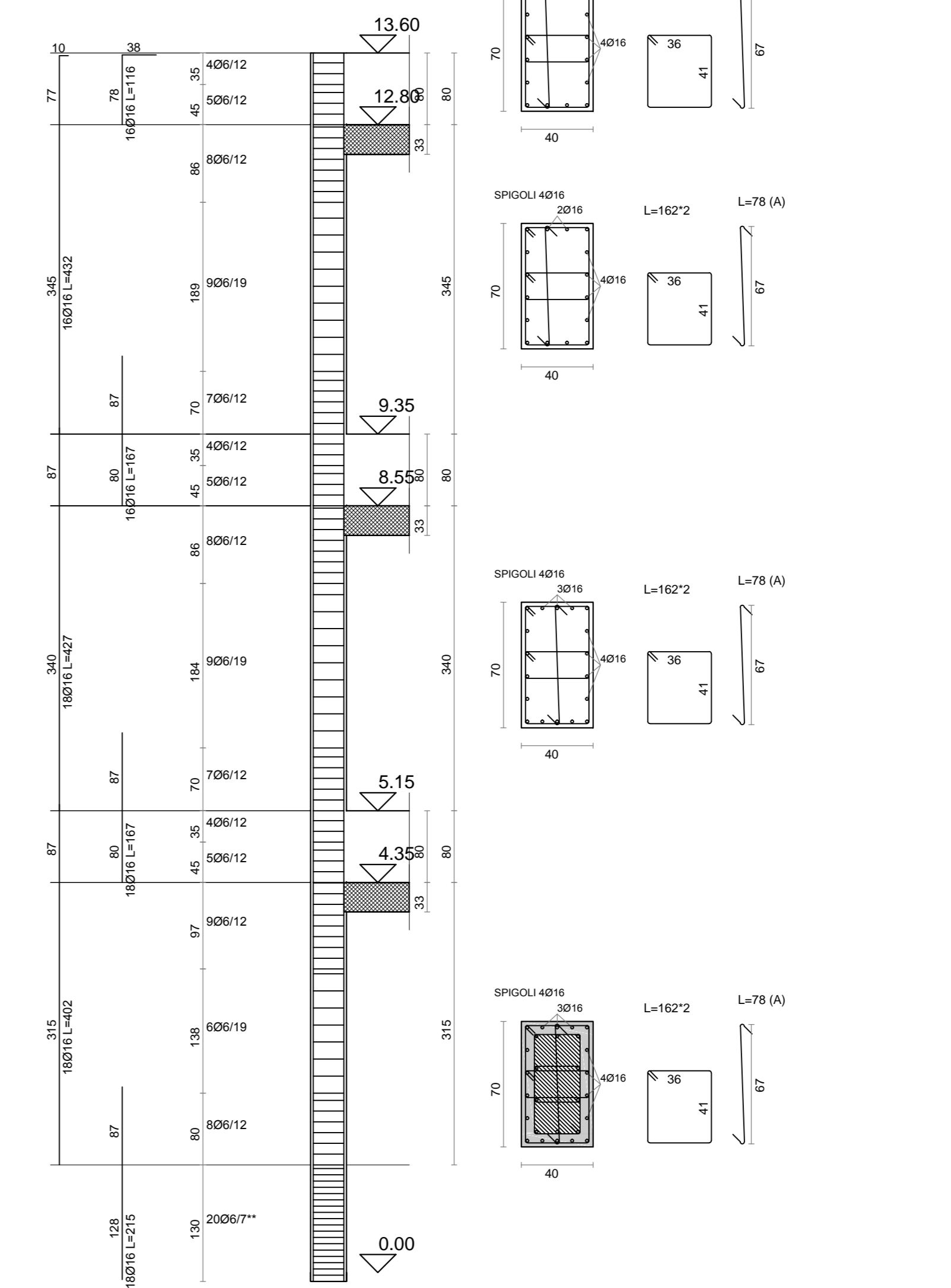
PILASTRATA 25



PILASTRATA 31



PILASTRATA 32



PILASTRATA 39

Ufficio tecnico Comunale - Settore LL.PP.



LAVORI DI MESSA IN SICUREZZA DEL PLESSO DELLA
 SCUOLA ELEMENTARE E MEDIA "F. CRISPI" DI PALAZZO ADRIANO PALERMO
 (PA)
PROGETTO ESECUTIVO
 Redatto ai sensi dell'Art.33 D.P.R. n.207/2010

IL PROGETTISTA **IL R.U.P.** **IL SINDACO**
 Università "Kore" di Enna Geom. Giuseppe Cuccia Ing. Carmelo Nicola Cuccia
 Ing. Dario Ticali

Ing. Mario Denaro