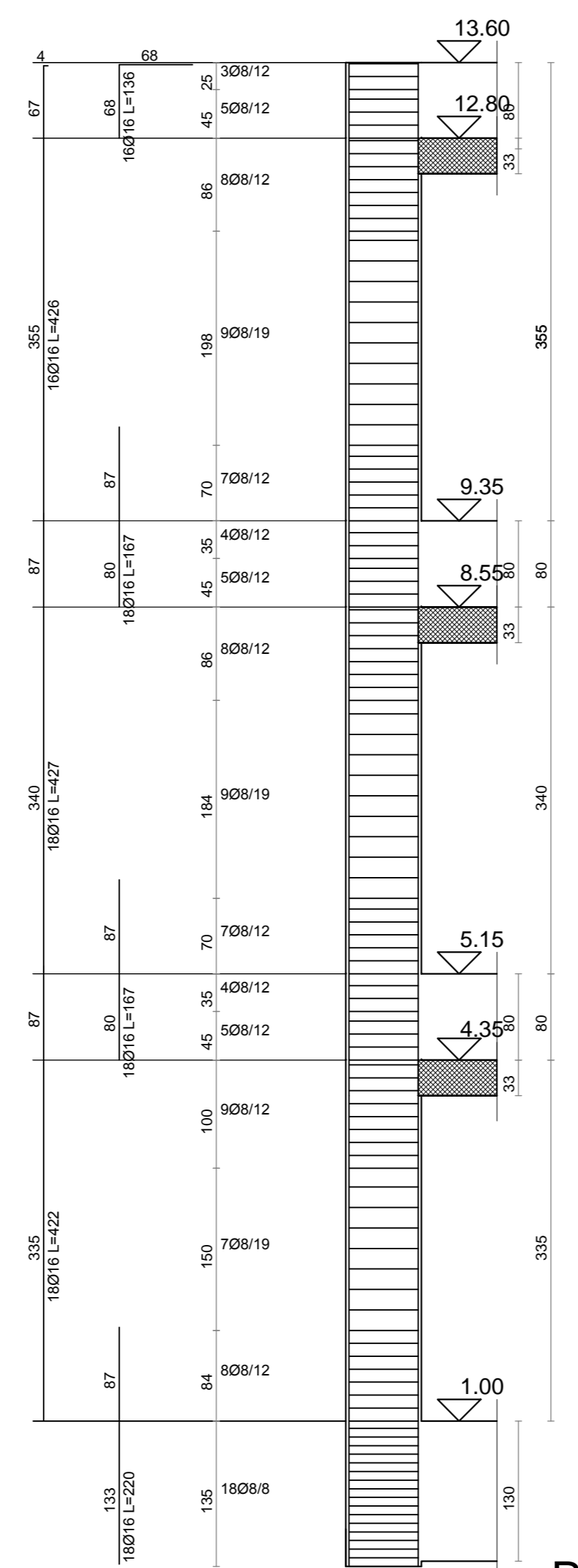
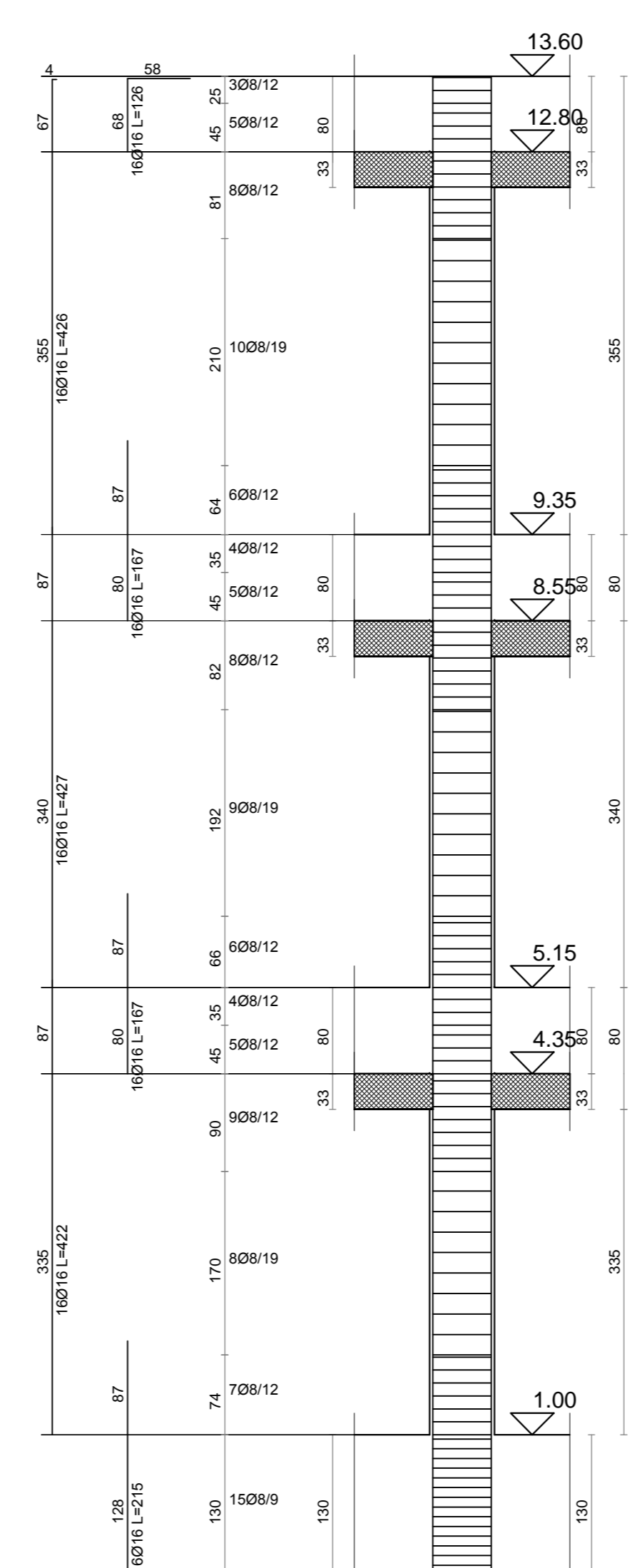


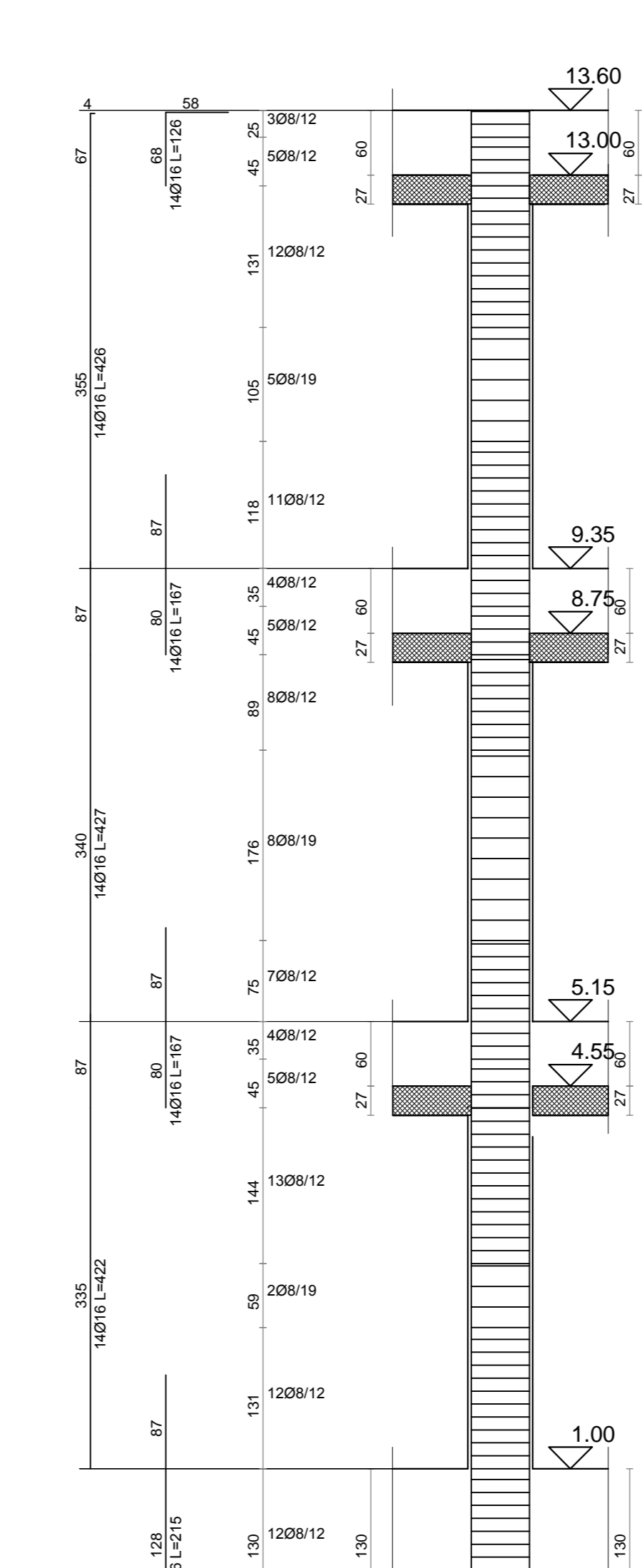
PILASTRATA 19



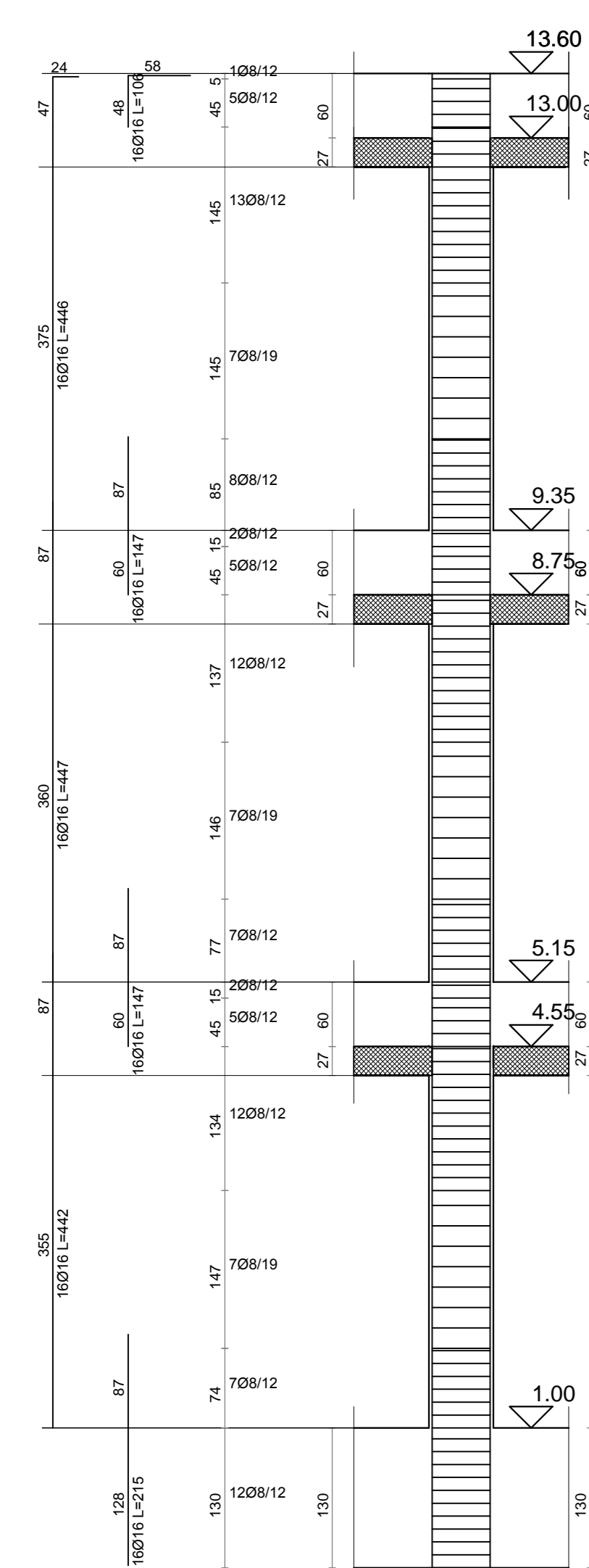
PILASTRATA 26



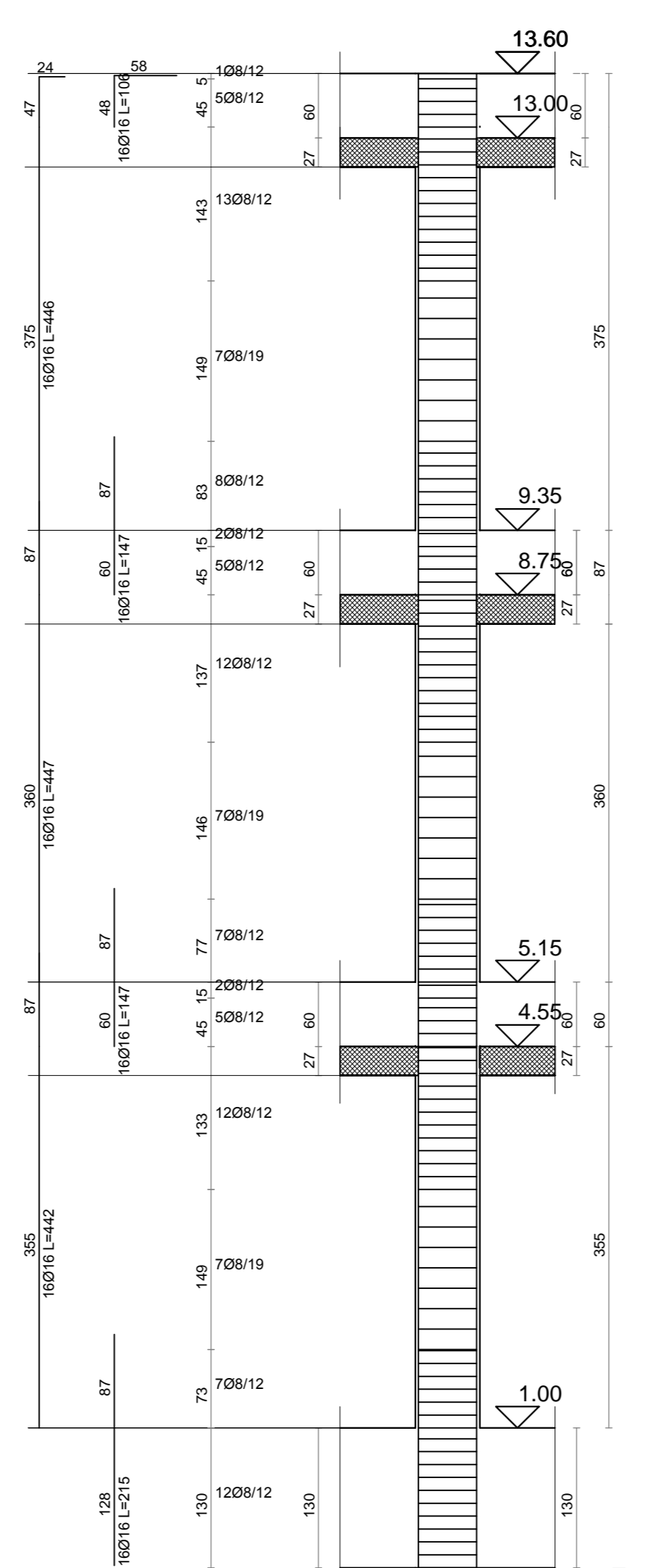
PILASTRATA 27



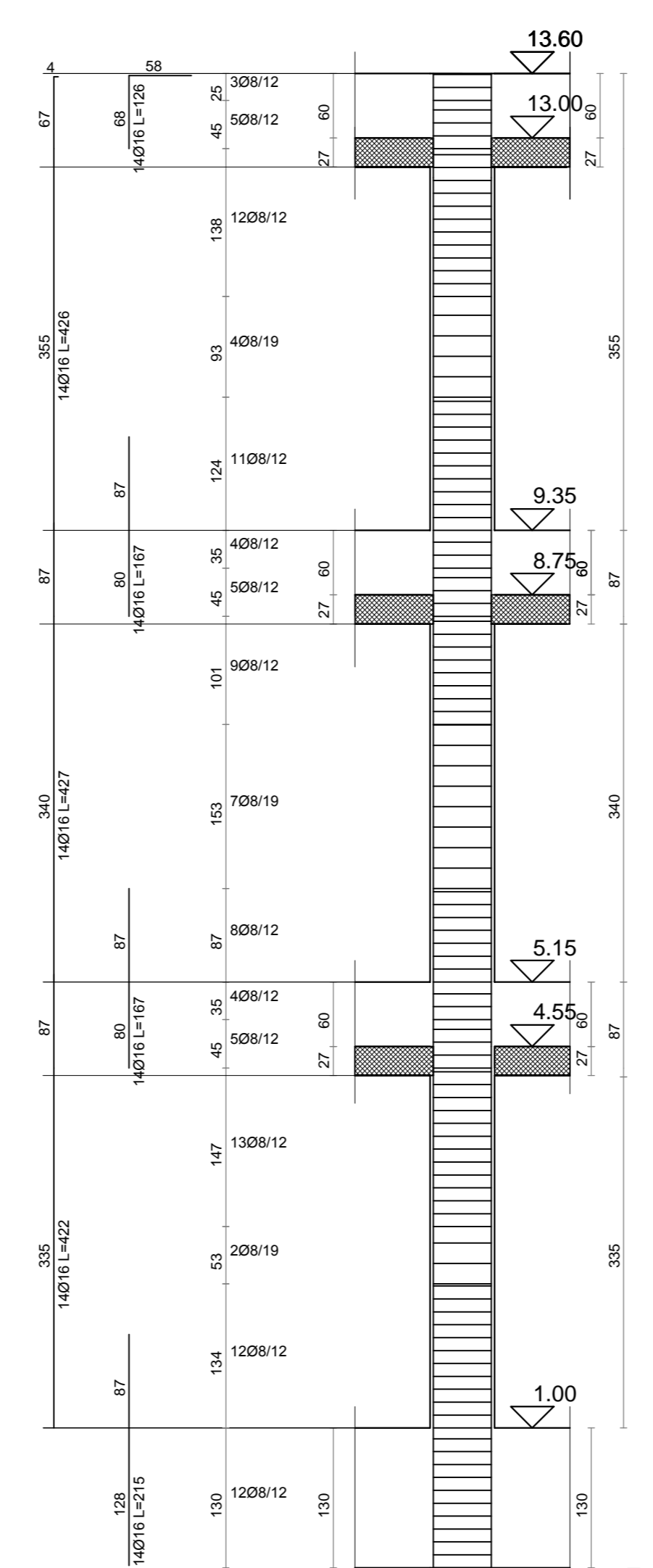
PILASTRATA 20



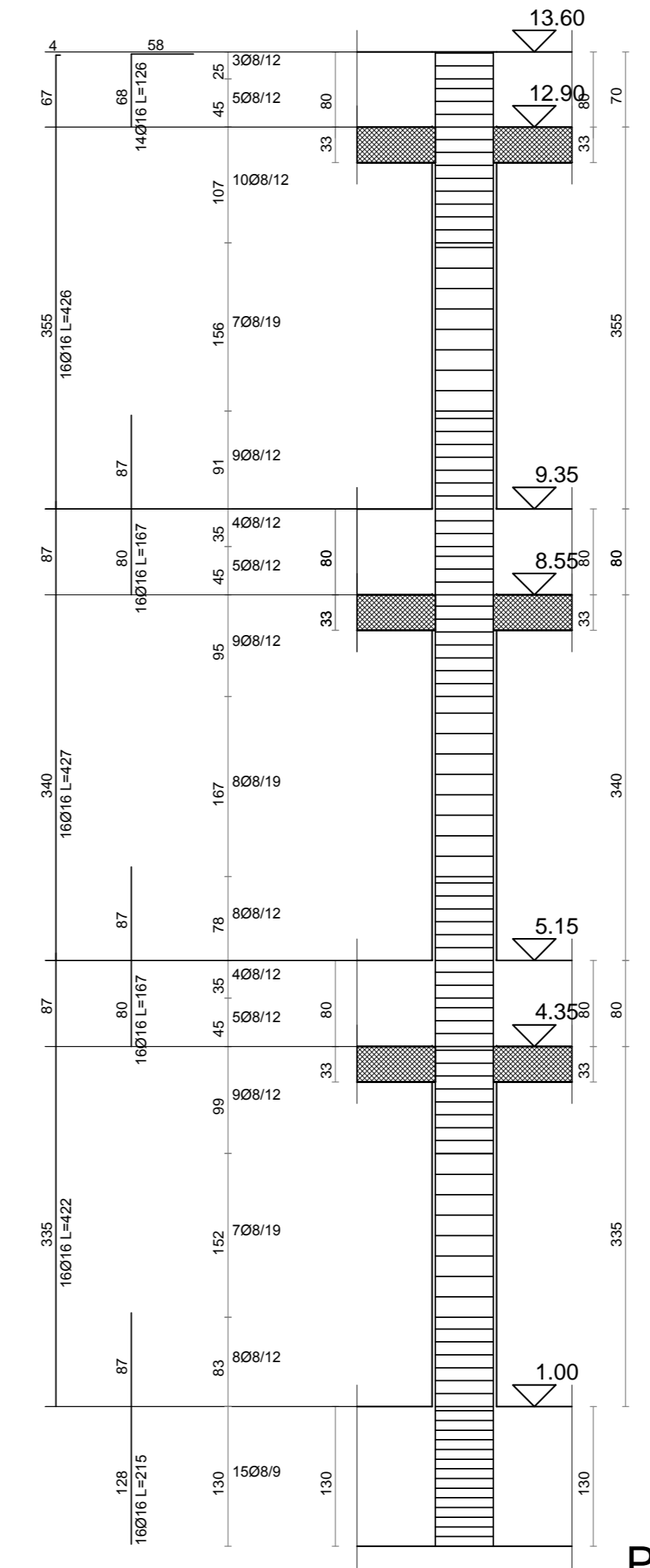
PILASTRATA 21



PILASTRATA 22





PILASTRATA 47



PILASTRATA 28

**Ufficio tecnico Comunale - Settore LL.PP.**

  
 COMUNE DI PALAZZO ADRIANO  
 PROVINCIA DI PALERMO

  
 UNIVERSITÀ "KORE" DI ENNA

LAVORI DI MESSA IN SICUREZZA DEL PLESSO DELLA  
 SCUOLA ELEMENTARE E MEDIA "F. CRISPI" DI PALAZZO ADRIANO PALERMO  
 (PA)  
**PROGETTO ESECUTIVO**  
 Redatto ai sensi dell'Art.33 D.P.R. n.207/2010

<b>IL PROGETTISTA</b> Università "Kore" di Enna	<b>IL R.U.P.</b> Geom. Giuseppe Cuccia	<b>IL SINDACO</b> Ing. Carmelo Nicola Cuccia
<b>Ing. Mario Denaro</b>		

**Tav.B.10.6**  
 PROGETTO CORPO A1 - PILASTRATE 19-20-21-22-26-27-28-47